

Enrolment in the Distance Education offered by AQ School is an option for students who meet Student With Disability (SWD) eligibility criteria and due to regional location are unable to attend one of the Education and Therapy Centres located in Brisbane at Brighton and Sunnybank Hills and in Cairns at Edmonton.\*

AQ School's Distance Education provides students with the opportunity to learn from home by interacting daily with the interdisciplinary team remotely. Technology plays a part in allowing the distance learning program to take place.

## Teaching and Learning Online

**AQ School's Distance Education has been designed for students in years 3 – 6.** The students engage in Australian Curriculum Learning Areas of English, Maths and HPE with other Learning Areas included in individual students' programs. The curriculum content, instruction and learning resources are provided by the interdisciplinary team and accessed by the home supervisor and student via online platforms. Each student has a Personalised Learning Plan (PLP) which is developed collaboratively. The student's PLP details key strategies and adjustments to supporting distance learning along with personalised learning goals.

### Distance Education Student

The teaching and learning program and model of delivery works well for students who can demonstrate an ability to:

- Engage in an **online platform**.
- Navigate a **learning device** – either laptop or computer.
- **Focus on a learning task** for a period of time.

### Distance Education Teaching Team

This is an **interdisciplinary team** who will **consult and collaborate** with the home supervisor and other stakeholders on a regular basis to:

- Develop and deliver a PLP for each student.
- Monitor and review the of progress of each student.
- Provide reasonable adjustments and modifications for each student.
- Develop and model **instructional strategies, intervention strategies and problem-solving strategies** to support each student's individual learning needs.

### Home Supervisor

**The home supervisor has a vital role in the Distance Education model.** This person/s typically knows the learner well and is present to consistently oversee the student's: access of the online learning opportunities; regular engagement in the student's PLP; and the submission of completed tasks and data to continually inform the teaching and learning program.

To achieve this the home supervisor is responsible for:

- Establishing a **positive learning environment** in the home.
- **Communicating** frequently with the interdisciplinary team – TEAMS calls, email, TEAMS meetings.
- Previewing learning materials provided by the interdisciplinary team.
- **Supervising** the student's engagement in learning tasks.
- Providing regular **feedback** to the interdisciplinary team.
- Participating in **collaborative conversations** to identify and unpack any barriers to accessing learning from home.

\*Priority will be given to students from remote and regional areas - as we aim to provide specialist schooling options for students across Queensland.

## Benefits of the Distance Education offered by AQ School

- Students can engage in learning without having to be physically present in an AQ School.
- The student’s daily and weekly distance education schedule can be flexible.
- Students can receive real time instruction and feedback from their interdisciplinary team.
- Students can interact with other classmates, via online environments established by the interdisciplinary team.
- Students have the flexibility to access materials, review content and practice skills at their own pace and as many times as necessary.
- Students can demonstrate knowledge and independent proficiency in skills through the development and sharing of an online personal portfolio.
- Some of the barriers, which make attendance in a mainstream school challenging, do not need to be navigated.
- Students can continue to access support from personal therapists in and around their daily and weekly learning schedule.

Attendance in the Distance Education offered by AQ School is measured by the student’s regular engagement in his or her program and frequent sharing of student’s work at his/her independent and individual level.

## Requirements

### Technology

- Suitable device that the student can use with a level of independence. This could be a laptop or computer.
- Headset and microphone to allow the student to participate and communicate online.
- Strong and consistent internet connection to minimize interruptions to the daily and weekly online learning schedule.
- Access to a printer to produce learning materials that have been developed and provided by the interdisciplinary team.

### Learning Environment

- A designated area in the home to be ‘school’ during the week.
- A desk and/or workspace free from distractions.
- Easy access to resources and/or tools that support learning (for example - visual schedules, fidgets, sensory chair topper).
- A system for organising and storing student materials and teaching and learning resources.

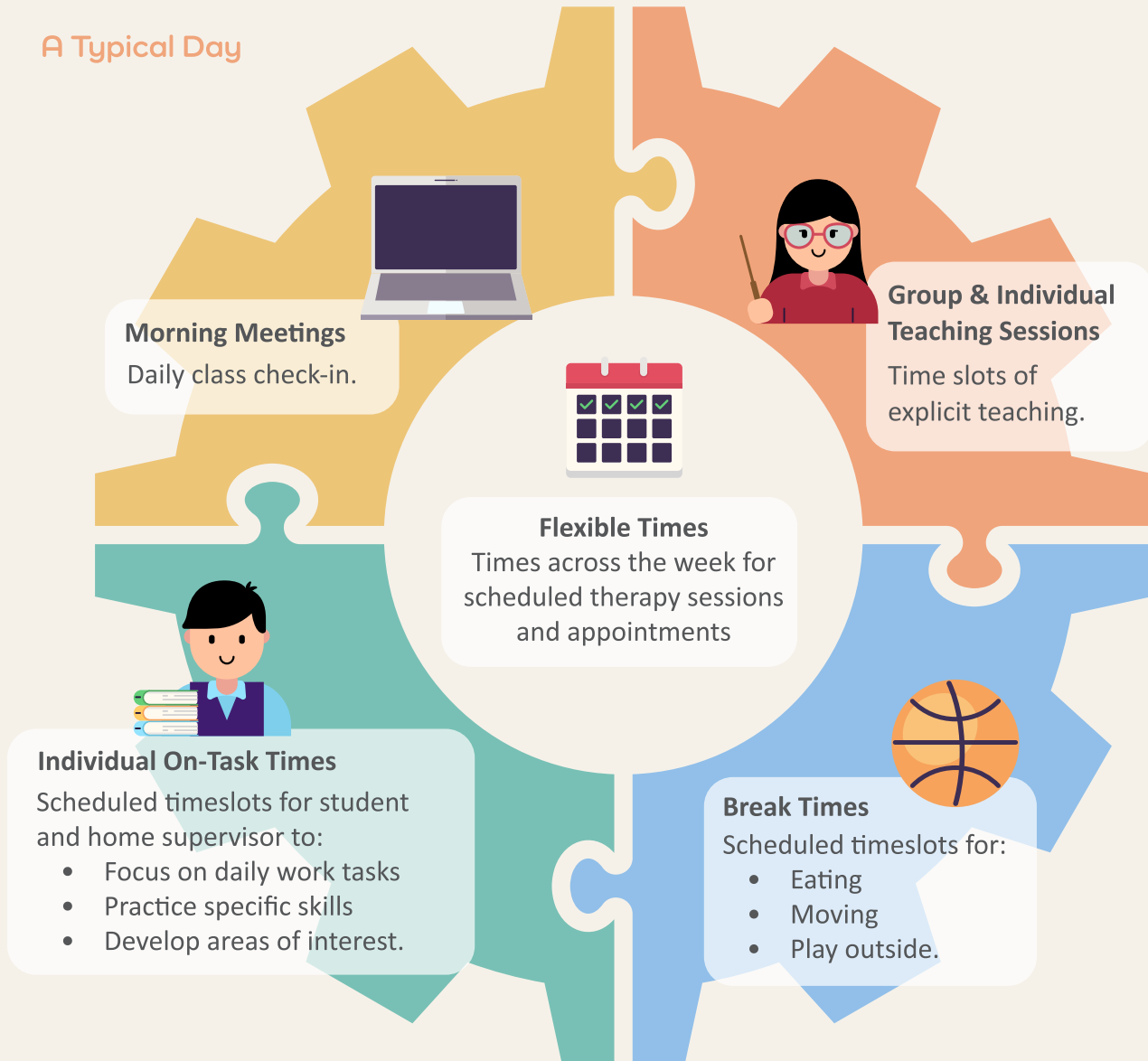


Check your home connectivity with **Microsoft 365** requirements:



<https://connectivity.office.com/>

## A Typical Day



## Important Considerations

**AQ School's Distance Education has many benefits; however, there are also potential challenges.**

To assist parents to determine the suitability of the distance education program and the specific benefits for their learner it helps to consider and discuss the following questions.

1. Where in the home can a positive learning environment be set up and what items will need to be included?
2. Who will assume the consistent role of the home supervisor and what time does this person have available for this role?
3. What skills has the student acquired that will benefit his or her engagement in the distance learning program?
4. What changes or additions will be required to your family's daily and weekly schedule to accommodate learning from home?