

DISTANCE EDUCATION

Designed to give eligible students the opportunity to access personalised learning from home with daily supports from an interdisciplinary team.

Scan me



Our goal is to support autistic students in accessing the Australian Curriculum to their fullest potential.

Enrolment is available for students meeting Student With Disability (SWD) eligibility criteria and are unable to attend an AQ Education and Therapy Centre (scan QR code for locations). **Please note:** Whilst we also accept expressions of interest from metro areas, regional and remote students are given priority.

All students engage in the **Australian Curriculum Learning Areas** of English, Maths, and Health and Physical Education. Other areas, such as Science, The Arts, and Humanities and Social Sciences (HASS), are included in personalised programs, schedules, and interactive digital workbooks based on each student's engagement and learning needs.

The **interdisciplinary team** provides curriculum content, instruction, and learning resources, which are accessed by the home supervisor and student through online platforms. Each student has a **Personalised Learning Plan (PLP)**, developed collaboratively with the student, their family, and the AQ School team. The PLP outlines key strategies, adjustments, and personalised learning goals to support effective distance learning.

Benefits of the Distance Education

- Remote learning without attending an AQ School in person.
- Flexible education schedule, allowing adjustments to daily and weekly routines.
- Live instruction and feedback from their interdisciplinary team online.
- Classmate interaction via established online environments.
- Access to materials and ability to practice skills at student's own pace.
- Students can showcase their skills by creating and sharing an online portfolio.
- Reduced mainstream school attendance challenges.
- Students can still access personal therapy support around their learning schedule.

(07) 3273 0000 / css@autismqld.com.au / autismqld.com.au



Scan me



Attendance is measured by the student's engagement with their educational activities and the regular submission of work at their own independent and individual level.

Distance Education Student

The teaching and learning program and model of delivery works well for students who can demonstrate an ability to:

- Engage in an **online platform**.
- Navigate a **learning device** – either laptop or computer.
- **Focus on a learning task** for a period of time.

Distance Education Teaching Team

This is an interdisciplinary team who will **consult and collaborate** with the student, home supervisor and other stakeholders on a regular basis to:

- Develop and deliver a PLP for each student.
- Monitor and review the progress of each student.
- Provide reasonable adjustments and modifications for each student.
- Develop and model instructional **strategies, intervention strategies and problem-solving strategies to support each student's individual learning needs**.

Home Supervisor

The **home supervisor plays a crucial role** in the Distance Education model, serving as a consistent support for the learner. This person, who typically knows the student well, is responsible for overseeing the student's access to online learning opportunities, regular participation in their Personalised Learning Plan (PLP), and timely submission of completed tasks and data to continuously inform the teaching and learning program.

To fulfill this role, the home supervisor is expected to:

- Establish a **positive and conducive learning environment** at home.
- Maintain **regular communication** with the interdisciplinary team via TEAMS calls, emails, and meetings.
- **Review learning materials** provided by the team in advance.
- **Supervise the student's engagement** in learning activities.
- Provide **consistent feedback** to the interdisciplinary team.
- Engage in **collaborative discussions** to identify and **address any barriers** to learning from home.

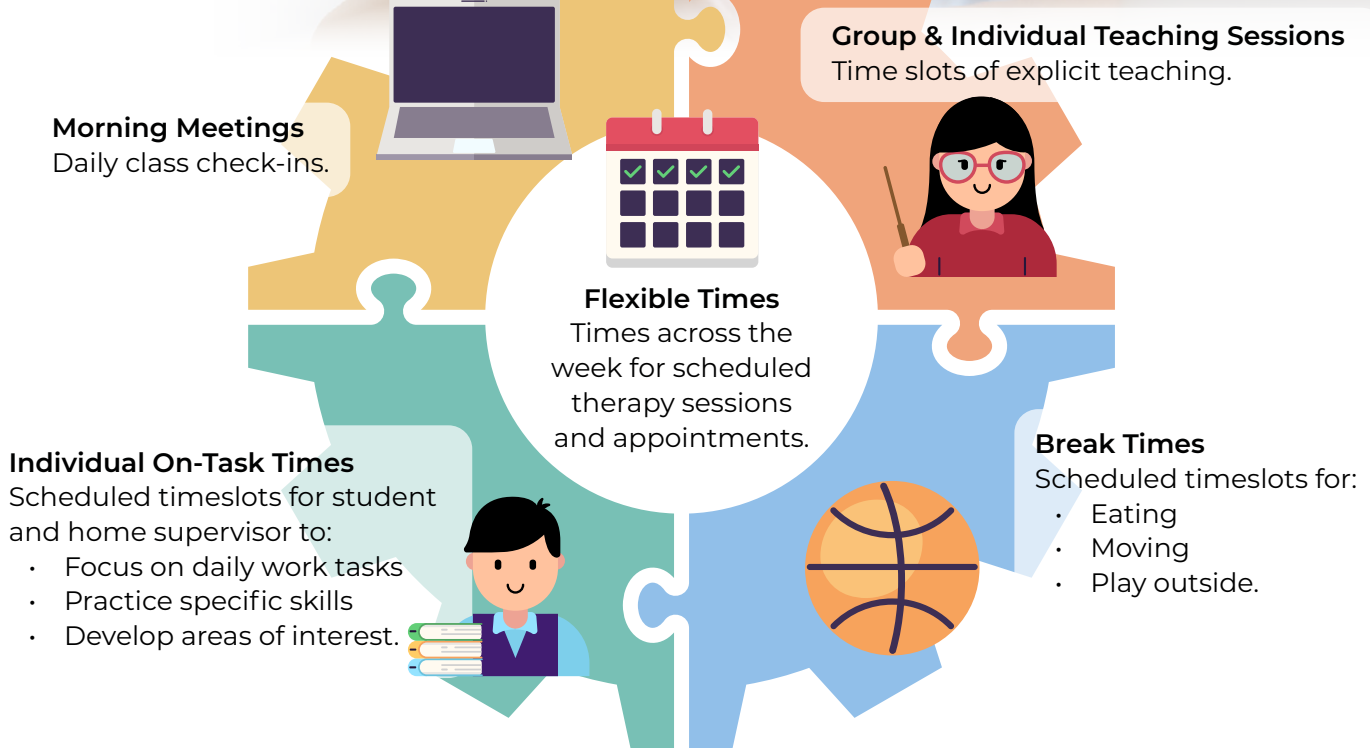
(07) 3273 0000 / css@autismqld.com.au / autismqld.com.au



Check your home connectivity with Microsoft 365 requirements:



A Typical Day:



Technology Requirements

- A suitable device (laptop or computer) that the student can use independently.
- Headset with a microphone for online participation and communication.
- Strong, reliable internet connection to avoid disruptions.
- Some access to a printer for printing learning materials (not required all the time).

Learning Environment Requirements

- A designated 'school' area in the home.
- A distraction-free desk or workspace.
- Easy access to learning tools (e.g. visual schedules, fidget tools etc.).
- Organised system for student materials and resources.

Key Considerations

AQ School's Distance Education has many benefits; however, there are also potential challenges. When evaluating suitability for your child, consider these questions:

1. **Learning Environment:** Can you set up a positive learning space?
2. **Resources/Equipment:** Have you considered what you may need?
3. **Home Supervisor:** Who can commit to this and how much time can they dedicate?
4. **Student Skills:** What skills does your child have that will help them succeed?
5. **Schedule Changes:** What adjustments will you need to make to routines?

(07) 3273 0000 / css@autismqld.com.au / autismqld.com.au