

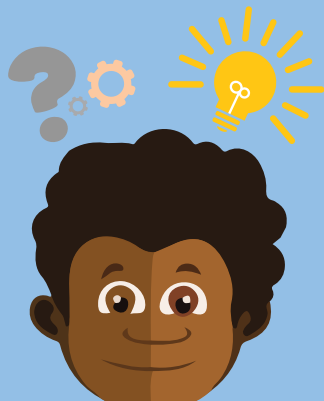
PARTICIPATION
OPPORTUNITY
CHOICE

SOCIAL WORK

AVAILABLE FACE-TO-FACE AT THE GOLD COAST, OR STATEWIDE VIA TELEPRACTICE.

An AQ Social Worker can provide:

Therapy, education, counselling, and adjustment supports.



Assistance and planning for psychosocial/clinical assessments, NDIS funding, and other supports.



Goal planning, capacity building, advocacy support, and resources.



Community engagement and relationship management.



What happens next? We'll assess your/your child's social environments, relationships, and access to resources. We'll provide counselling and tailored goals/plans for therapy, education, assessments, funding, and community engagement to support capacity building and wellbeing.

You can access these services in-person, via Telepractice, at home, or in community settings. Please note: fees and waitlists apply; NDIS funding may be used if applicable.

(07) 3273 0000 / css@autismqld.com.au / autismqld.com.au